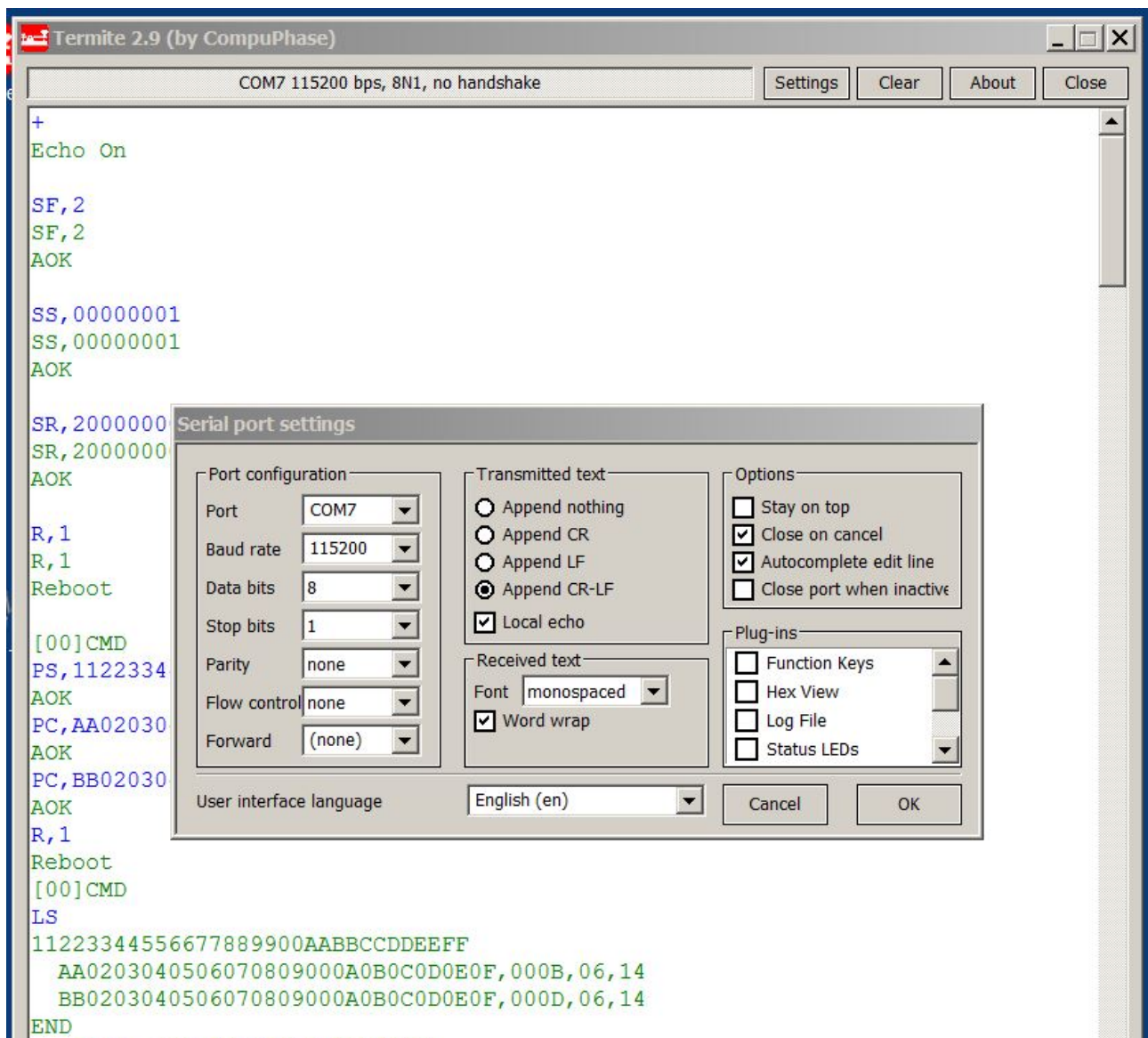


Setting up a Microchip RN4020 PICTAIL board for data connection (23.01.2015)

After connecting the board to the PC via USB, you have to configure your terminal program. The module defaults to

Baud Rate 115200
Data Bits 8
Parity None
Stop Bits 1
Flow Control None

Below is the setup on a Win7, 32 bit PC, using Termite by CompuPhase as terminal.



It is very important, that the terminal sends the typed in characters as they are typed in, not applying any filters or conversions to them. In Termite do not use the Hex View Plug-In for instance. Be sure to close the commands with CR/LF.

You can test the connection by typing

+

which switches the echo on, and should be answered by the module with
Echo On

If this is not the case, try to reboot the module by typing

R,1

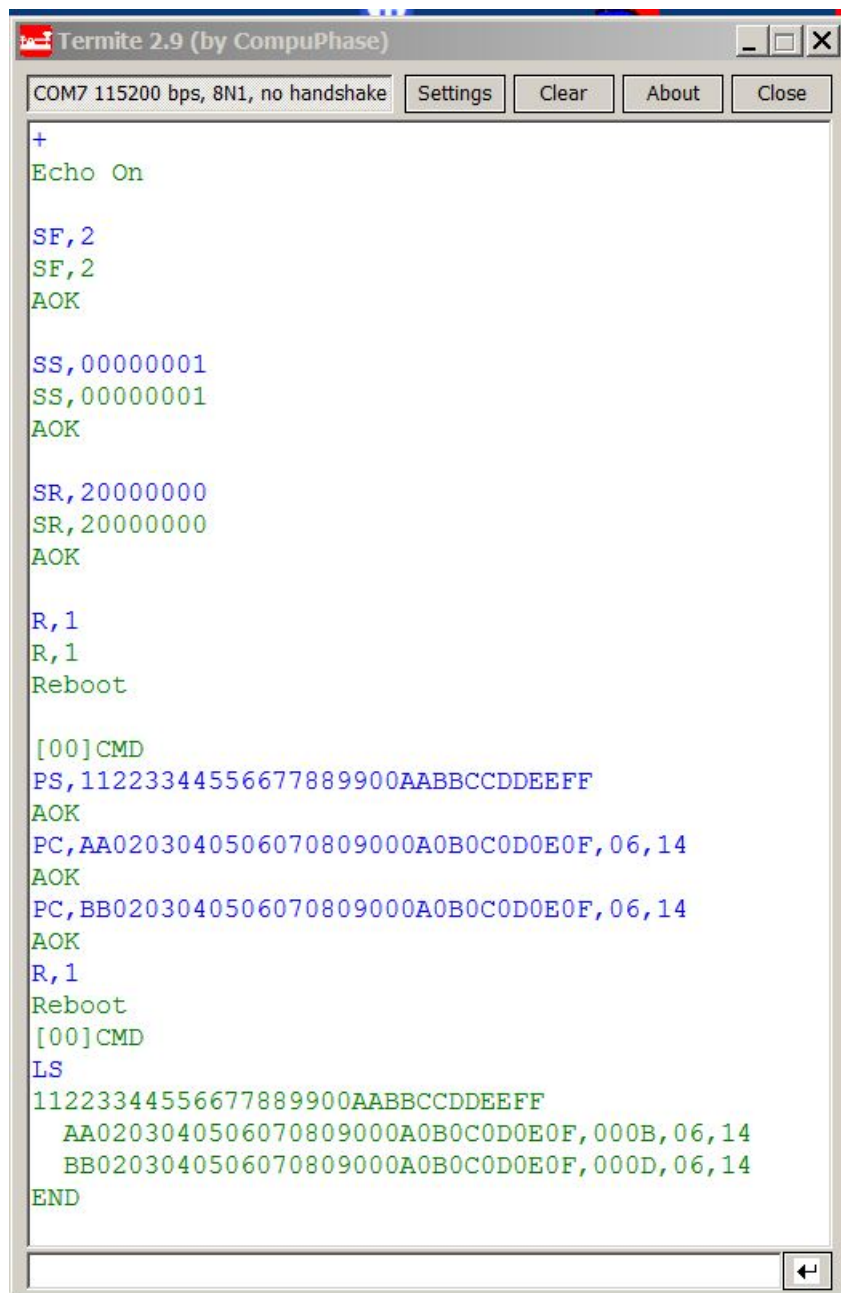
The answer should be

Reboot

[00]CMD

Once you have connected successfully, you have to set up a Private Service with 2 Characteristics.

The following shows a complete setup sequence, typed in commands in blue, module answers in green. I will comment on the lines following the screenshot.



The screenshot shows a terminal window titled "Termite 2.9 (by CompuPhase)". The status bar at the top indicates "COM7 115200 bps, 8N1, no handshake" and includes buttons for "Settings", "Clear", "About", and "Close". The terminal content shows a sequence of commands and responses:

```
+
Echo On

SF,2
SF,2
AOK

SS,00000001
SS,00000001
AOK

SR,20000000
SR,20000000
AOK

R,1
R,1
Reboot

[00]CMD
PS,11223344556677889900AABBCCDDEEFF
AOK
PC,AA0203040506070809000A0B0C0D0E0F,06,14
AOK
PC,BB0203040506070809000A0B0C0D0E0F,06,14
AOK
R,1
Reboot
[00]CMD
LS
11223344556677889900AABBCCDDEEFF
  AA0203040506070809000A0B0C0D0E0F,000B,06,14
  BB0203040506070809000A0B0C0D0E0F,000D,06,14
END
```

+	Echo on
SF,2	Complete factory reset (recommended)
SS,00000001	Set User Defined Private Profile
SR,20000000	Module is peripheral, Auto Advertise
R,1	Reboot, to let the changes become effective

PS,11223344556677889900AABBCCDDEEFF

Set the UUID of the Private Service. You can use any 128 bit number.

PC,AA02030405060708090A0B0C0D0E0F,06,14

Add the first Characteristic to the Private Service. UUID, Properties READ and WRITE WITHOUT ANSWER , maximum data size 20. Note, that all values have to be typed as hex numbers.

PC,BB02030405060708090A0B0C0D0E0F,06,14

Add the second Characteristic to the Private Service. UUID, Properties READ and WRITE WITHOUT ANSWER , maximum data size 20. Note, that all values have to be typed as hex numbers.

R,1	Reboot, to let the changes become effective
-----	---

LS	List the Private Service and the added Characteristics, for controlling.
----	--

That's it. The Module is now configured for data transfer.